

A wooden log signpost with a black sign and a fleur-de-lis logo. The signpost is made of a thick, horizontal log with a vertical post on the left. The sign is black with a jagged, wood-grain-like border. On the left side of the sign is a fleur-de-lis logo with a stylized 'H' inside. The background is green with white pine tree silhouettes.

FRIENDS OF HINDS PRESENTS

CAMP WILLIAM HINDS:

PANTHER POND

VISIT OUR ONLINE MUSEUM AT

<http://FriendsOfHinds.org>

Six Year Old Boy Struck Down By Auto And Killed

Son of Charles B Hinds
Was Playing in
Vaughan Street
When Hit

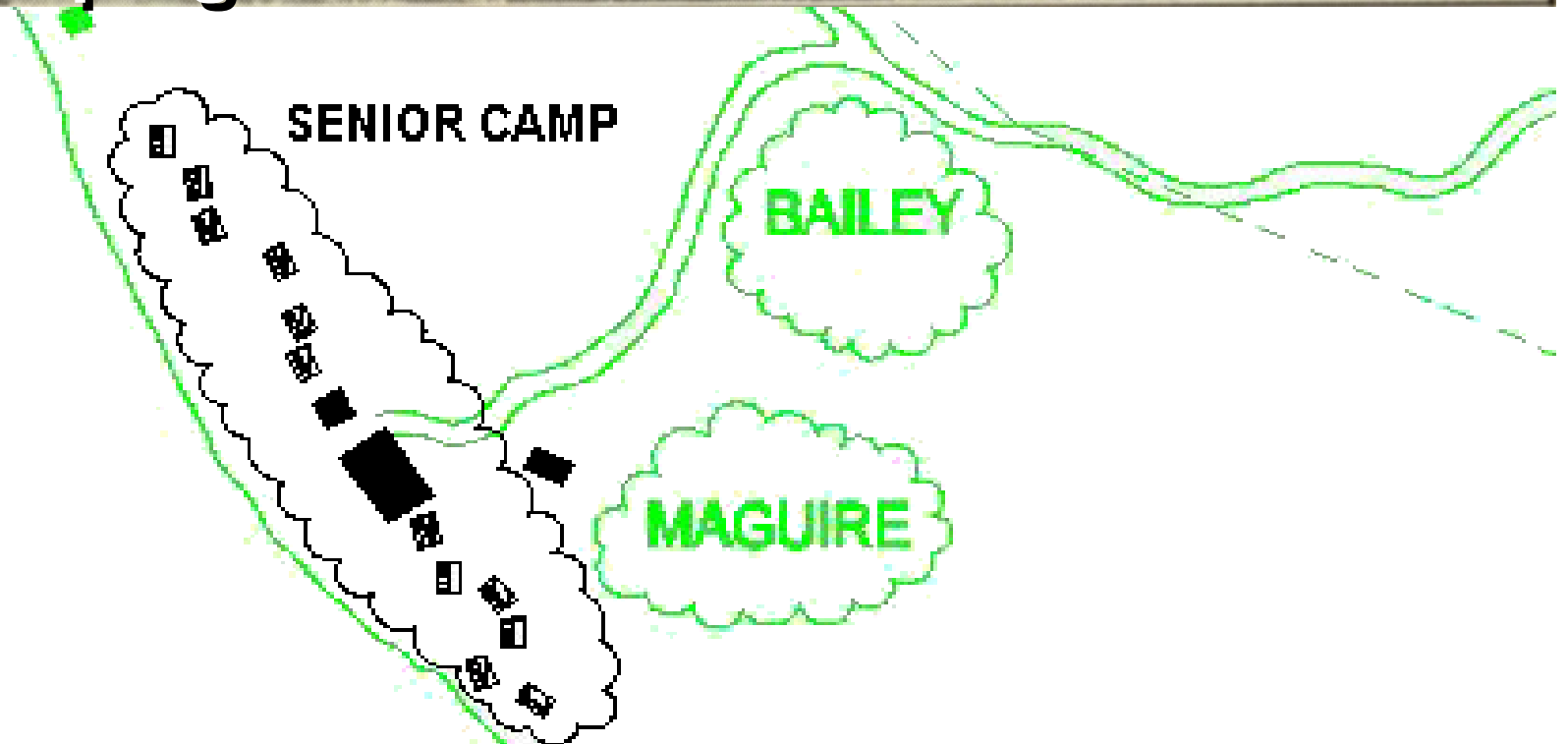


William B. Hinds
1918-1925

The Property

- **Site was selected on June 5th 1927**
- **Berry Farm located on the northern end of Panther Pond**
- **125 acres of woodlands and open fields**
- **Half mile frontage on Panther Pond**
- **One mile frontage on Tenny River**
- **Property Cost \$8,200**
- **With buildings and materials initial investment of \$25,000**

- In the mid 30's property across Tenny River was purchased
- Senior Camp opened in 1938
- 12 lean-tos for 24 campers
- Also Leader's Cabin, Rec Hall, and Latrine
- Designed for Scouts 14 years of age or older
- Special program

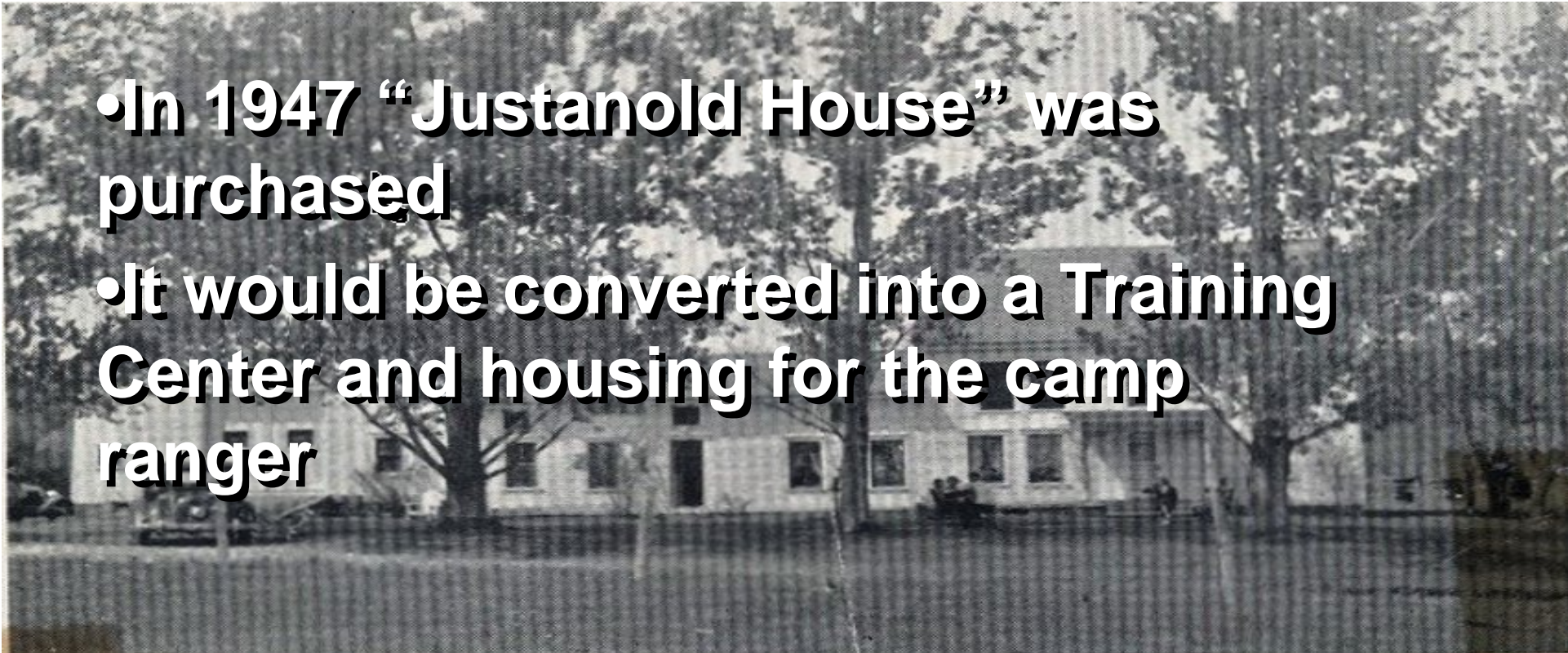




- To access Senior Camp Scouts needed:
- First a rowboat
- Then the Queen Mary
- Finally the Tenny Belle (Shown here)
- Bridge wasn't built until 1967

Current Tenny River Bridge





- In 1947 “Justanold House” was purchased
- It would be converted into a Training Center and housing for the camp ranger



JUSTANOLD HOUSE - 1947



ROTARY TRAINING CENTER

After Reconstruction



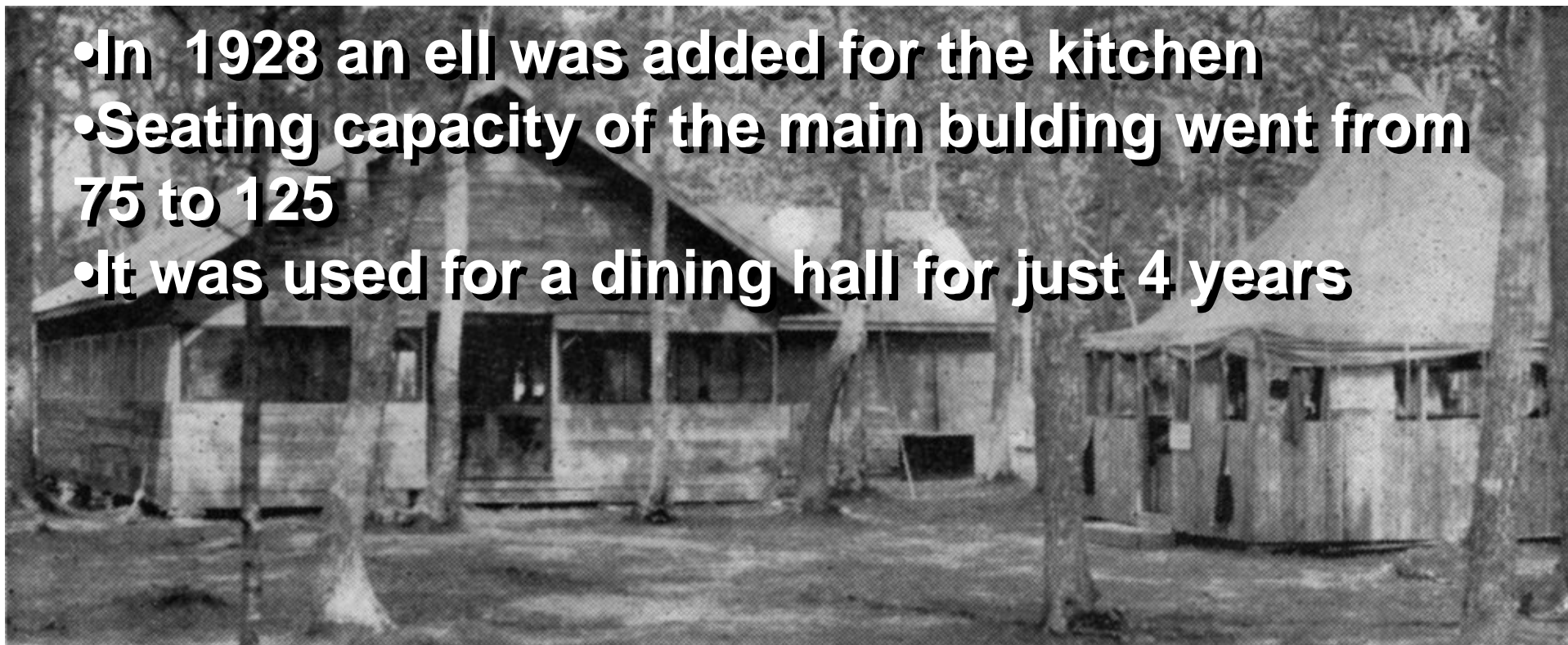
MAJOR CAMP BUILDINGS



- Camp was purchased on June 5th and opened for the first time on June 25th
- In those 20 days the first dining hall was erected
- It was 45' x 24' and seated 75 Scouts
- The kitchen was at one end
- Window areas were screened in
- Campers constructed shutters later



- In 1928 an ell was added for the kitchen
- Seating capacity of the main building went from 75 to 125
- It was used for a dining hall for just 4 years



• When the new dining hall was announced in the 1931 brochure, it also stated "The old mess hall will be converted into a nature museum where Scouts under expert leadership can study plant and animal life and make their collections"

• Until 1951 this building was the craftshop. Then came the big blizzard of 1952 and the weight of the snow caved in the roof.



ORIGINAL DINING HALL - 1928



- 1928: The second building erected on the Camp Hinds property was the Recreation Hall.
- Only building from the first five years still standing.
- provided space for camp offices, trading post, recreation activities and rainy day programs. .



- The Recreation building is a low rambling structure 70'x50' with a wide covered piazza on three sides.
- Here on rainy days the Scouts gather to play games, read and write letters.
- A massive field stone fireplace heaped high with blazing logs radiates warmth and cheerfulness.
- Pool tables, a library of some 500 boys' books, a piano, and a radio provide ample recreation for the boys.



Rec Hall - 1928



HEADQUARTERS, RECREATION HALL, CAMP WILLIAM HINDS, BOY SCOUTS, RAYMOND, MAINE

Rec Hall - 1928



Rec Hall - 2008



- A New Dining Hall built in 1931.
- The main dining room is 72' long and 33' wide
- The dining hall was enlarged by 32 feet, adding sixteen more tables to the capacity in 1962.
- The old kitchen was torn down and a new kitchen was opened for the 1990 season.
- The fireplace was also added making the dining hall useful for evening campfires and programs.
- The Dining Hall was named after Johnny Ring in 1992.
- Ring Dining Hall was used until 2017



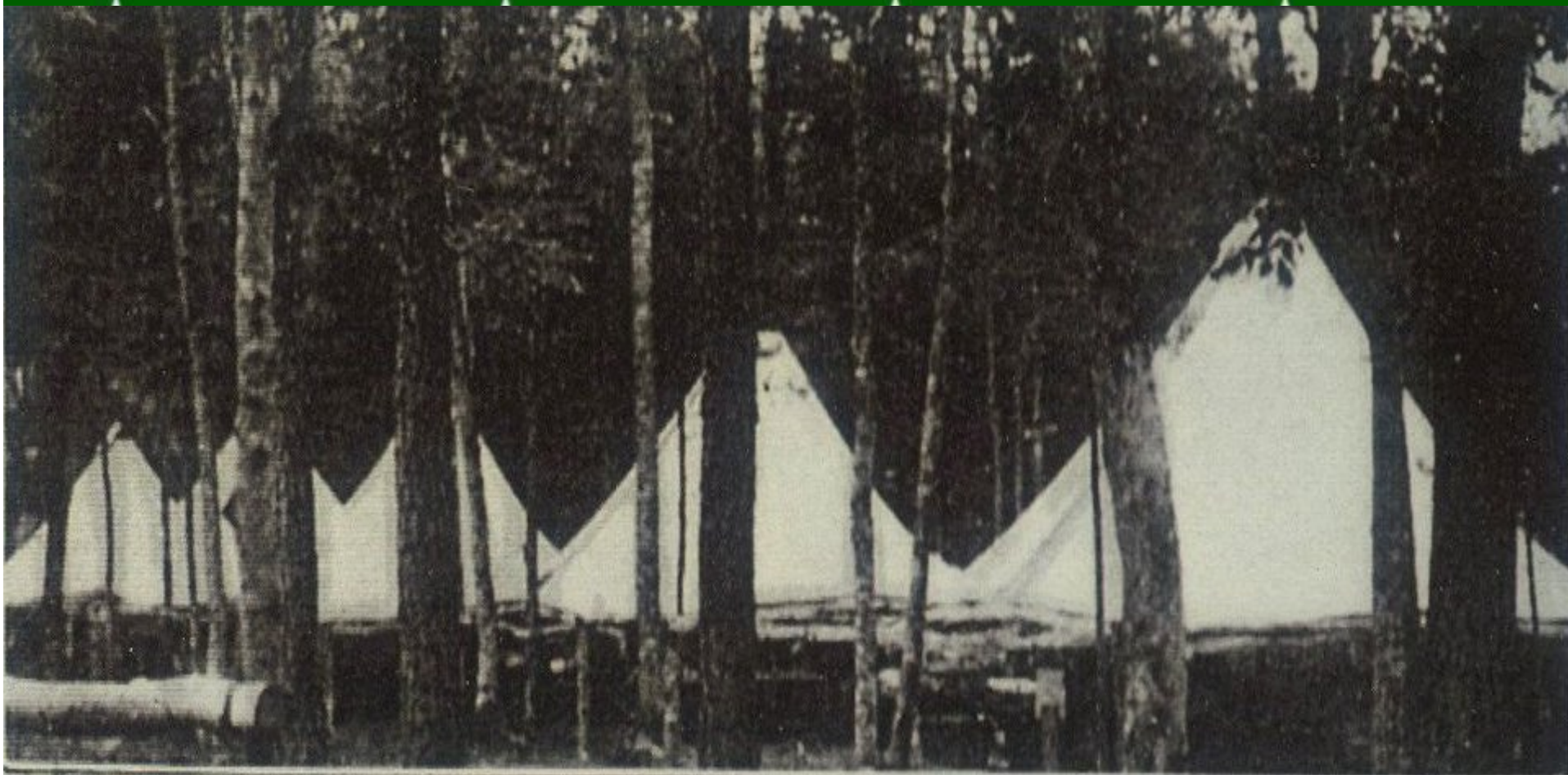
Dining Hall - 1931



Current Dining Hall Opened in 2017



CAMPsites



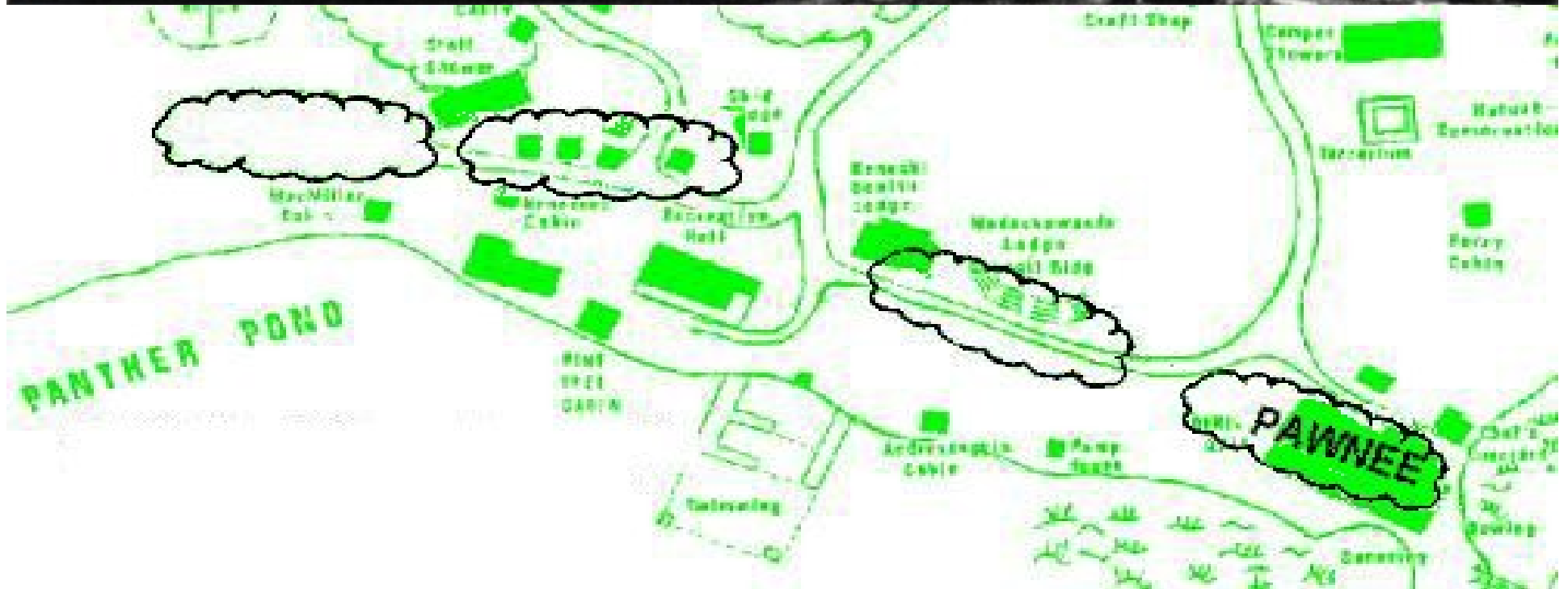
- Original Plan called for tents for 35 Scouts
- In 1927 there was one campsite locate near the current council ring
- Had row of 8 Army tents on wooden platforms
- Each tent slept 8 – Patrol Leader and 7 Scouts
- Each person had a metal army cot and a straw mattress



- Within a couple of years, more space was needed
- A second site was built in the area where Ring Hall sits today
- The sites were referred to as Site A and Site B



- By 1930 there were four campsites
- Sites were given indian names
- We can only find documentation of Pawnee Campsite



- In 1931 Pawnee was closed to make room for a new dining hall
- Four Sites were named for American Heroes and Explorers: Lindbergh, Byrd, MacMillan, and Peary



Original Campsite - 1927



Rec Hall and Site A



INSPECTION, CAMP WILLIAM HINDS, BOY SCOUTS, RAYMORD, MAINE,

Lindbergh Campsite



Byrd Campsite



MacMillan Campsite



Peary Campsite



- **Currently we have 14 Troop Sites**
- **Each site has capacity between 8 and 52 Scouts**
- **Tents are 2-man tents with wooden platforms and folding cots**
- **9 campsites on the “main side” and 5 sites on the “Tenny Side”**



1927 PROGRAM

- Eight weeks of camp. Four two-week sessions.
- Cost \$7.00 per week. \$1.00 reservation fee required to hold your space
- Week runs from Saturday to Saturday in 1927
- By 1930 the week was from Tuesday to Tuesday

Lakeside Council Ring

Rec Hall is off to left & MacMillan Campsite is behind



Lakeside Council Ring

Rec Hall is in rear & MacMillan Campsite is off to the right



CHIPMUNK POINT - BOATING

Rowboats, Canoes, and Cutters



WATERFRONT

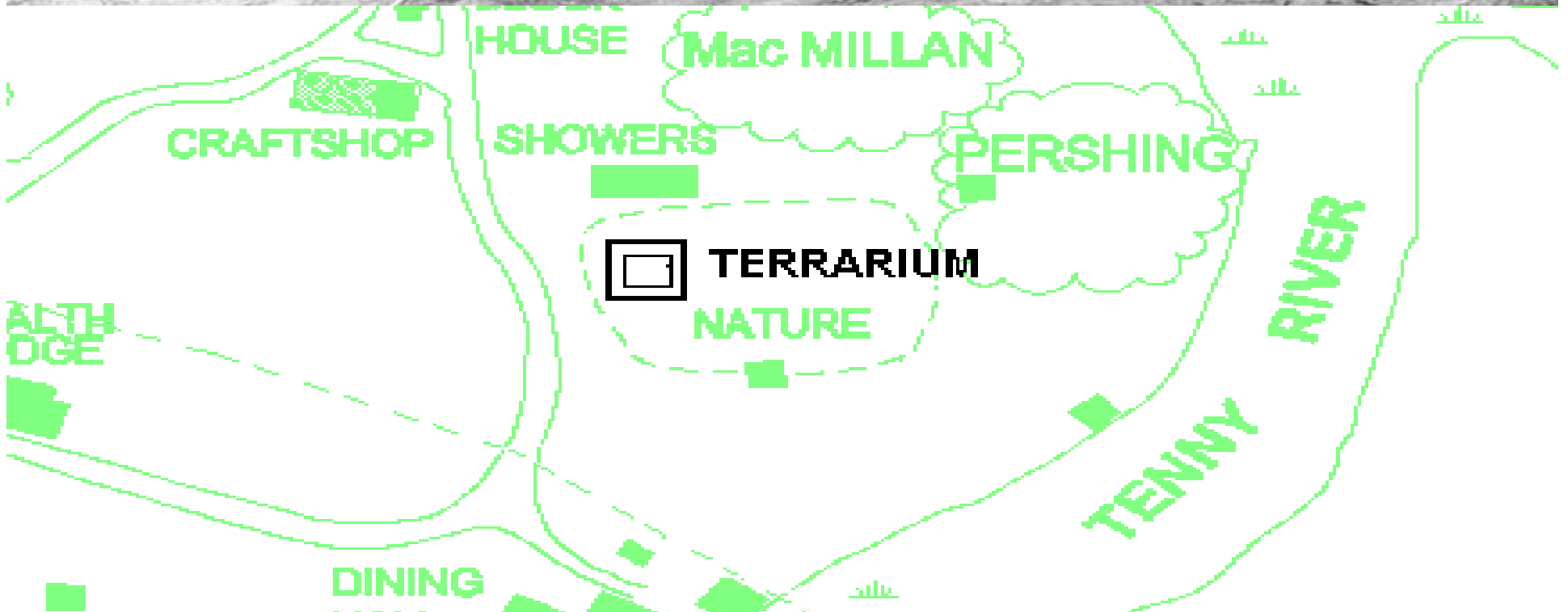


CAMP WICWAPA HINDS BOY SCOUTS RAYMOND, MAINE,

WATERFRONT



• In 1938 Paul Siple, a nationally-known scientist, was the Nature Director, and he took on the project of building this terrarium to provide a spot where aquatic life could be sheltered and studied.



The Terrarium



The Terrarium

